

Aliwei EID300 Media Gateway

Figure



EID3000 media trunk gateway is E1 digital gateway researched and developed independently by Aliwei communications Inc. It is the bridge between the public switched telephone network (PSTN/PLMN) and IP network, realize signaling transform from PRI, SS7 signaling and H.323, SIP and MGCP as well as PSTN bear channel and IP network media stream transform

Aliwei EIA3000 modularization trunk gateway 1U including 2 slots can set 1 E1/T1 trunk modules, provide up to 8E1/T1 trunk interface and 2U including 6 slots can set 1E1/T1 trunk modules, provide up to 24E1/T1 trunk interface Provide high density VoIP communication and dispose capability.

EID300 can service for traditional carriers, second class carriers, big enterprises and voip virtual carriers.

Key features:

- Highly scalability system supporting 720 channels of VoIP calls at its compact H/W
- 64bit RISC Microprocessor Architectures
- New Trunk Interface Module : 1-T1, 2-T1, 4-T1 & 1-E1, 2-E1, 4-E1 - ISDN-PRI, R2, SS7* Signaling Protocol Support
- 2-Port 10/100Mbps Fast Ethernet Interface
- G.723.1, G.726, G.729A, G.711 GSM-FR Voice Compressions
- H.323 v3 VoIP Protocol with ITU-T H.235 Security Feature
- ITU-T H.323 v3 VoIP Protocol with ITU-T H.235 Security Feature
- ITU-T H.323 v3 VoIP Protocol with ITU-T H.235 Security Feature
- Support Voice Processing Features - VAD, DTMF,CNG,G.168, and T.38 G3 Fax Relay - G.723.1,G.729A,G.711 Voice Compressions
- Standard & Extended Access List for Security Functions
- Essential Scalability Features such as DHCP Server Relay, NAT/PAT, IEEE

Technical Specification

Hardware Specification

Microprocessor

64bit RISC Microprocessor

Memory

Flash Memory

8Mbyte

SDRAM Memory

64Mbyte High-Speed SDRAM

Boot Memory

512Kbyte Flash Memory

Network Interface Module

- 2-Port 10/100Mbps Fast Ethernet Interface (2 x RJ45)

- 2-Port Asynchronous Serial Interface (1 x RJ45)

Trunk Interface Module

- 1-Port Digital E1/T1 Trunk Interface (1 x RJ45)

- 2-Port Digital E1/T1 Trunk Interface (2 x RJ45)

- 4-Port Digital E1/T1 Trunk Interface (4 x RJ45)

Capability

1E1/T1,2E1/T1,4E1/T1,8E1/T1---24E1/T1

Power Requirement

VAC 110~220V, 50/60Hz, 15Watt

Operating Temperature

0°C to + 45°C (32° to 112°F)

Storage Temperature

-40°C to + 85°C (-40° to 176°F)

Relative Humidity

5% to 95% (Non-condensing)

Dimensions (H x W x D)

310X195X68 19" Rack Mountable Chassis

Weight(kg) 4.8/8 kg

External AAA

Call detail record CDR)

RADIUS support

PSTN/VoIP prepaid Support

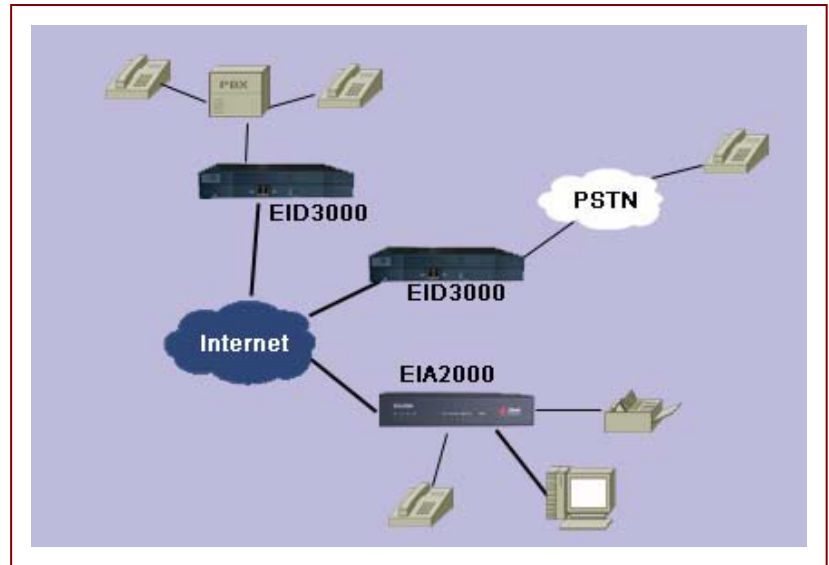
Embedded AAA

Embedded prepaid/postpaid service

Point/second calculation

Second/ Point calculation

PSTN/VoIP Prepaid Support



Network Diagram Using Aliwei Digital Gateway

Support Protocol and Service

Routing Protocols

Static and IEEE 802.1Q VLAN Routing, RIP v1/v2, OSPF v2

WAN Protocols

Point-to-Point Protocol (PPPoE for ADSL), DHCP, Static IP etc.

Voice over IP Services

- ITU-T H.323 v3 VoIP Protocol with ITU-T H.235 Security Feature

- ISDN-PRI, R2, DTMF, SS7* Signaling Protocol

- H.323, SIP Stack Support

- SIP protocol support compliant with IETF RFC3261(or RFC2543)

- G.723.1, G.729.A, G.711 Voice Compressions

- Voice Processing Features Supports
 - VAD, DRMF, CNG, G.168 and T.38 FAX Relay

- ITU-T H.323 Gateway, Gatekeeper Support

- Enhanced QoS Management Features for Voice Traffics

Network Management

Remote Management using Console, Rlogin, Telnet

Voice over IP services

Signaling : ISDN,PRI,SS7 QSIG

Protocol: H.323,SIP.mgcp.PTR/RTCP

Decode

G.711 u-law PCM audio G.726-32 audio

GSM-FR audio G.723.1 audio G.729 A audio

G.711 A-law PCM audio G.728 audio G.726 audio