

Aliwei EID3000 Media Gateway

Figure



EID3000 is a high performance Media Gateway providing high scalability, reliability, cost-effective service. It is the bridge between the public switched telephone network (PSTN/PLMN) and IP network, realize signaling transform from PRI, SS7 signaling and H.323, SIP and MGCP as well as PSTN bear channel and IP network media stream transform

Aliwei EID3000 modularization trunk gateway 1U including 2 slots can set 1E1/T1, 2E1/T1, and 4E1/T1 trunk modules, provide up to 8E1/T1 trunk interface and 2U including 6 slots can set 1E1/T1, 2E1/T1, and 4E1/T1 trunk modules, provide up to 24E1/T1 trunk interface Provide high density VoIP communication and dispose capability.

Not only general QoS algorithm, EID3000 supports the advanced QoS algorithms to maintain state-of-art voice quality on any types of conventional IP networks.

With the years of experience and the know-how of traditional carriers, second class carriers, big enterprises and voip virtual carriers application. EID3000 is the right choice for secured, next generation communication.

Key features:

- Highly scalability system supporting 720 channels of VoIP calls at its compact H/W
- 32 64 bit RISC Microprocessor Architectures
- Two (2) and Six (6) Slots for Digital 1E1/T1, 2E1/T1, and 4E1/T1 trunk modules
- 2-Port 10/100Mbps Fast Ethernet Interface
- Support ISDN, PRI, SS7, QSIG Signaling Protocol
- SIP and , H.323, Concurrent Stack
- H.323 v3 VoIP Protocol with ITU-T H.235 Security Feature
- ITU-T H.323 v3 VoIP Protocol with ITU-T H.235 Security Feature
- ITU-T H.323 v3 VoIP Protocol with ITU-T H.235 Security Feature
- Support Voice Processing Features
 - VAD, DTMF,CNG, G.168, and T.38 G3 Fax Relay
 - G.723.1, G.726, G.729A, G.711 GSM-FR Voice Compressions
- Standard & Extended Access List for Security Functions
- Essential Scalability Features such as DHCP Server Relay, NAT/PAT, IEEE
- Cisco Style Command Line Interface(CLI)
- Standard 1Ux19" and 2Ux19" Rack Mountable Chassis

Technical Specification

Hardware Specification

Microprocessor

64bit RISC Microprocessor

Memory

Flash Memory

8Mbyte

SDRAM Memory

64Mbyte High-Speed SDRAM

Boot Memory

512Kbyte Flash Memory

Network Interface Module

- 2-Port 10/100Mbps Fast Ethernet Interface (2 x RJ45)

- 2-Port Asynchronous Serial Interface (2 x RJ45)

Trunk Interface Module

- 1-Port Digital E1/T1 Trunk Interface (1 x RJ45)

- 2-Port Digital E1/T1 Trunk Interface (2 x RJ45)

- 4-Port Digital E1/T1 Trunk Interface (4 x RJ45)

Capability

1E1/T1, 2E1/T1, 4E1/T1, 8E1/T1---24E1/T1

Analog Interface Module

- 4-Port FXS/FXO Analog Interface (4 x FXS/FXO)

- 8-Port FXS/FXO Analog Interface (8 x FXS/FXO)

Capability

4FXS/FXO, 8FXS/FXO, 12FXS/FXO----48FXS/FXO

Power Requirement

VAC 110~220V, 50/60Hz, 15Watt

Operating Temperature

0°C to + 45°C (32° to 112°F)

Storage Temperature

-40°C to + 85°C (-40° to 176°F)

Relative Humidity

5% to 95% (Non-condensing)

Dimensions (H x W x D)

310X195X68 19" Rack Mountable Chassis

Weight (kg) 4.8/8 kg

Voice over IP services

Signaling : ISDN, PRI, SS7 QSIG

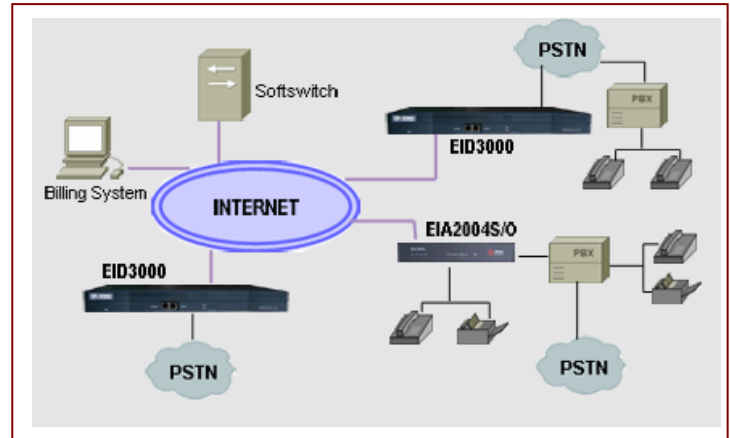
Protocol: H.323, SIP, mgcp, PTR/RTCP

Decode

G.711 u-law PCM audio G.726-32 audio

GSM-FR audio G.723.1 audio G.729 A audio

G.711 A-law PCM audio G.728 audio G.726 audio



Network Diagram Using Aliwei Digital Gateway

Support Protocol and Service

Routing Protocols

Static and IEEE 802.1Q VLAN Routing, RIP v1/v2, OSPF v2

WAN Protocols

Point-to-Point Protocol (PPPoE for ADSL), DHCP, Static IP etc.

Voice over IP Services

- ITU-T H.323 v3 VoIP Protocol with ITU-T H.235 Security Feature

- ISDN-PRI, R2, DTMF, SS7* Signaling Protocol

- H.323, SIP Stack Support

- SIP protocol support compliant with IETF RFC3261(or RFC2543)

- G.723.1, G.729.A, G.711 Voice Compressions

- Voice Processing Features Supports

- VAD, DRMF, CNG, G.168 and T.38 FAX Relay

- ITU-T H.323 Gateway, Gatekeeper Support

- Enhanced QoS Management Features for Voice Traffics

Network Management

Remote Management using Console, Rlogin, Telnet

External AAA

Call detail record CDR)

RADIUS support

PSTN/VoIP prepaid Support

Embedded AAA

Embedded prepaid/postpaid service

Point/second calculation

Second/ Point calculation

PSTN/VoIP Prepaid Support