

Aliwei AL-IPX5000 IPPBX System

Figure



Aliwei AL-IPX5000 series are based on the latest softswitch technology, supporting not only traditional voice and fax service but also transmission of data, including text, image and multimedia. It combines the PSTN with computer networks, and completely resolves the problem of traditional PBX, such as lack of openness, various standards, high price etc.

Compared with traditional PBX, Aliwei AL-IPX5000 series have better capability, stability, reliability, small in size etc advances. The equipments can be applied in either private telephone networks or PSTN, providing 32 to 256 internal calls. AL-IPX5000 consisting of E1 digital trunk interface, FXO analog trunk interface and VOIP trunk interface. It supports signals such as PRI, R2, SS7 etc and many kinds of add value service functions, it supports VOIP protocols like MGCP, SIP, H323. AL-IPX5000 can guarantee the safety of all internal sites communication even if any accessing line was broken. Aliwei AL-IPX5000 series can also simulation circuit switch, establish calls from IP networks to PSTN, compatible with the traditional existed PBX. Moreover, the new IPPBX is based on an open IP standard. All equipments conform to the same standard. Accordingly, they can easily communicate with each other, while the traditional PBX did not have the advantage. Using IPPBX will greatly cut down the cost of the maintenance.

Aliwei AL-IPX5000 series can be easily expanded for adding users. Internal modules have to be changed for most traditional PBX when the company need to add branch calls based on current PBX system, which results in a big waste of money, Adopting Aliwei AL-IPX5000 series, The cheap common analog phones can be used. Do not need expensive special digital phones.

Aliwei AL-IPX5000 series can be introduced into various kinds of industry such as enterprise, government and other public offices as well as VoIP carriers and telecom carriers.

Features

Supports triple stack of VoIP standard protocols

Support triple stack of H.323, SIP and MGCP. Inter-work well with other VoIP systems. Support AAA、Radius etc security protocols.

Good Compatibility

Compatible with GK, softswitch system, analog gateway, digital trunk gateway, voice card, traditional/digital PBX, IP phone, soft phone, NetMeeting system or terminal equipments adopting international standard protocols. Support SNMP Protocol.

High density

Support 256 concurrent internal calls,4-16 analog trunk interface or 1-8 E1/T1 digital trunk interface.

Flexible networking capability

Users may select modules according the need. It is possible for each inbound call to combine one outbound call. Do not need to change usual dial method. When the equipments are configured to full capability, Users may add E1/T1 trunk gateway or FXO gateway (E1D3000 or E1A20X) to inter connect with PSTN networking. Users also may select FXS gateway, IP phone and soft phone to expand terminal users.

Extensibility for the future

Working with softswitch, it support communication add valued function and second developing and application. Meet the need of new requirement in the future. Realize seamless handover with operator's NGN networking .

Flexible dialing methods

Users may set dialing methods according the habit or plan a new one according the whole VoIP networking.

Good quality of Voice and stability

Adopt traditional PBX circuit switch to the communications between FXS ports. IP voice communication adopt high-performance algorithm. Support 802.1Q VLAN、802.1p、TOS etc QoS technology. Working with switch, router etc equipments, realize IP voice communication QoS.

Support Voice Activity Detection (VAD), Comfort Noise Generation (CNG), Adaptive Echo Cancellation, Dynamic Jitter Buffer, Bad Frame Interpolation

Reliability

Adopt double power redundancy and grounding and lightning protection design. Select VS+VO module may make equipments have emergency function during power or networking cut.

The embedded system designing make the TCP/IP protocols safe from security problem.

Easy management

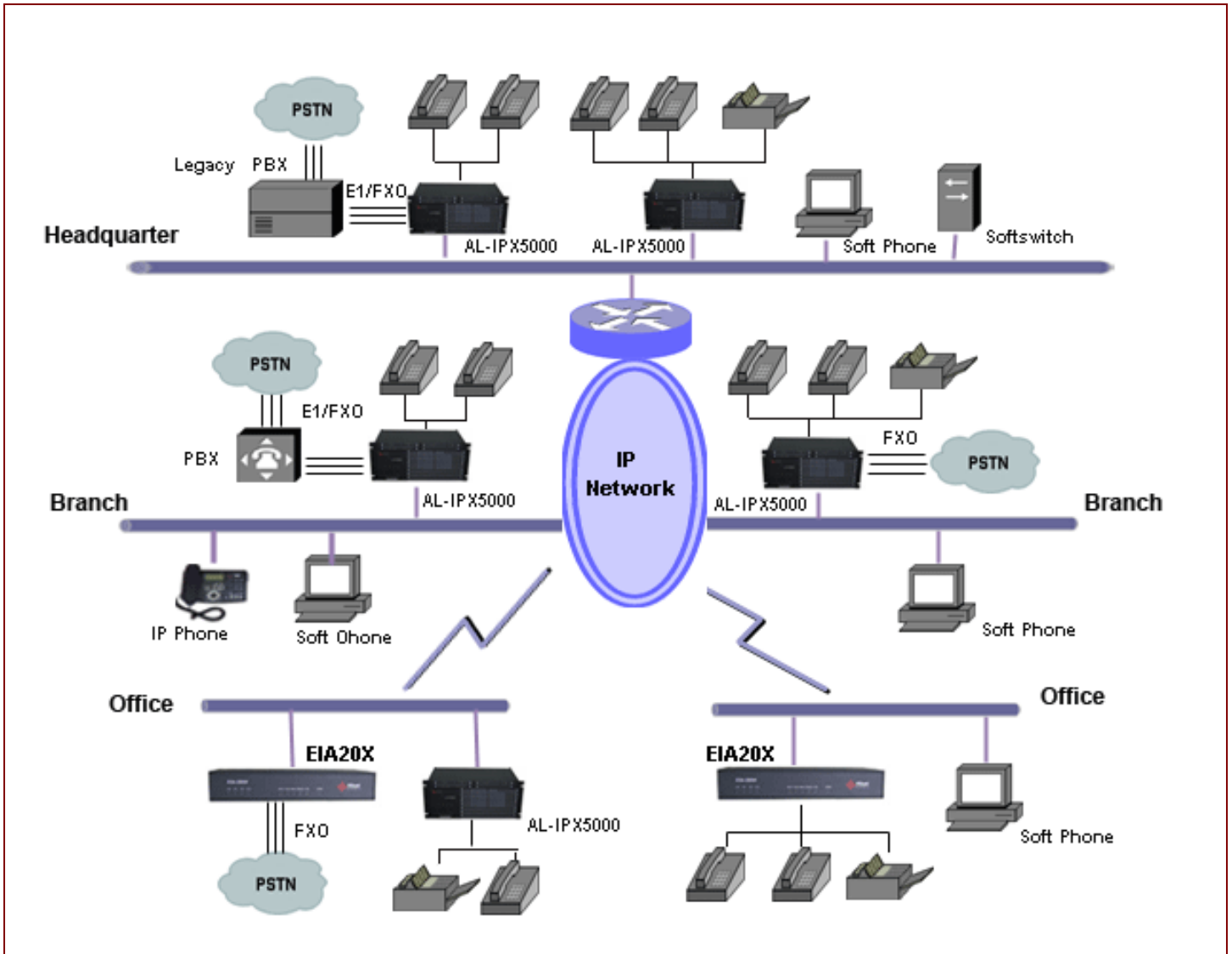
The high density of equipments make it is easy to diagnose and remove trouble. If configure networking management system, it will be easier to be managed and supervised.

Aliwei AL-IPX5000 IPPBX System

Specification

Capacity	256 concurrent internal calls 64 concurrent exterior calls by G.711 32 concurrent exterior calls using G.723 or G.729	
Protocol	MGCP SIP,H.323,H.248	
Audio Codec	G.711u-Law&A-Law,G.711Appendix1, G.723.1&G.723.1Annex.A,G.726, G.729 Annex A and Annex B ,GSM-FR; Each channel dynamic independent voice encoder.	
.Audio Feature	Voice Activity Detection (VAD), Comfort Noise Generation (CNG), Adaptive Echo Cancellation, Dynamic Jitter Buffer, Bad Frame Interpolation	
DTMF	DTMF detecting and generation, RFC 2833 compliant	
Function of dividing voice into groups	Supporting signal tone of call proceeding, VAD, dynamic programmable jitter buffer, detecting of modulate and demodulate; Completely supports Echo Elimination, voice status detecting, voice activity compression, jit buffer, comfortable noise production and so on.	
Service support	Voice	Support IP to IP,PSTN to PSTN and IP to PSTN
	Fax	Support Transparent transmission and T.38
Media gateway control and management	Configuration management	Console port SNMP v3 and embedded WEB server TFTP and TELNET.
	Configurable modules	2 digital relay slots, up to 8 roads E1 digital relay 8 user board slots.
	Signaling	SS7 、 R2 、 ISDN 、 PRI 、 QSIG
Interface	Two 10/100MB Ethernet Ports One D-SUB 9 pin RS-232 port	
Dimension	440x320x440mm (LXHXW)	
Power	90-240V auto switch	
Temperature	Operating: 0 - 40 degree C Storage: -10 - 60 degree C ; Non-Condensing	
Operating Humidity	10% to 90%	
Emission	CE, FCC, RoHS	

Application



Ordering

AL-IPX5000 Standard Configuration

2 10M/100M Ethernet Ports, 2 asynchronous port RJ45 (A0/0 as console) 2 NM/VM slots, 8 TDM slots, 256 concurrent Internal calls

Modules Available for NM/VM slots

- 1-Port PBX Digital E1 Module (1 x RJ45)
- 1-Port PBX Digital T1 Module (1 x RJ45)
- 2-Port PBX Digital E1 Module (2 x RJ45)
- 2-Port PBX Digital T1 Module (2 x RJ45)
- 4-Port PBX Digital E1 Module (4 x RJ45)
- 4-Port PBX Digital T1 Module (4 x RJ45)
- 4-Port FXS Voice Processing Module (4 x RJ11)
- 4-Port FXO Voice Processing Module (4 x RJ11)
- 8-Port FXS Voice Processing Module (8 x RJ11)
- 8-Port FXO Voice Processing Module (8 x RJ11)

Modules Available for TDM slot slots

- 32-Port FXS Voice Processing Module (32 x RJ11)
- 16-Port FXS Voice Processing Module (16 x RJ11)
- 16-Port FXO Voice Processing Module (16 x RJ11)